



# CONTAINER CONCEPTS

THINKING INSIDE THE BOX™

## **2015 FEATURED BOXES**

Proud to be a green product. Made in USA.



## Welcome to Container Concepts

We sell **Modular Business Solutions**; creating complete food service, retail, event, and utility businesses in a box. **Container Concepts** provides unique functional marketing by fitting brands with a vehicle to push forward their identity or message. It is a fresh made delivery system in a ready to go package.

Each concept can be outfitted with complete NSF rated kitchen equipment and UL rated custom lighting, HVAC, digital menus, touch screens, POP displays, AV equipment, Wi-Fi, as well as giant LED screens can all be options at an additional price. Brand logos can be wrapped or strategically placed through fabrication and signage. We use exterior textures like faux rock or woods or anything that matches the theme of the client's location or concept.

## Manufacturing

Our manufacturers have over 30 years of combined experience and administration in fabrication; building and installing mobile NSF rated kitchens. For business users needing immediate industry solutions, **Container Concept** products offer exquisite workmanship and design combined with state-of-the-art ergonomics and technology. We pride ourselves on designing and building our concepts in the United States.

**office:** 888.427.4014

**email:** [info@conceptinabox.com](mailto:info@conceptinabox.com)

**website:** [www.conceptinabox.com](http://www.conceptinabox.com)

not for construction\* These drawings and pictures are under copyright law. Not to be reproduced without "author's" written consent. All design ideas and concepts are the sole property of Container Concepts™ and are only to be used if contracted to do so.



## Pricing

**Container Concepts™** uses a base price and a design-build pricing structure for the customization of the box. This is best for quick, simple and professional customization standards and can be applied to any/all box sizes and container lines. This approach provides our valued clients, with endless possibilities for customization in order to best represent their concept branding while also giving ultimate control over final cost.

**Container Concepts™** also offers discount price structures. For a full container food park or very large orders, we offer a franchise territory/unit discount to both of the Retail segments (Specialty Retailers and direct sales). Distribution center pricing is available to those interested in being a distributor. Financing is also available and can be discussed after the initial quotation.

## Ordering

All orders begin with a completing the client intake information followed by a preliminary consultation. Once contracts are signed the process takes approximately (6) six to (8) weeks from design to delivery. Times will vary based on size and scope of the project. Contact our office to begin the process today.

**The base measurements are not exact, actual dimensions vary for every box. Additional brand-able areas available upon request.**

**office:** 888.427.4014

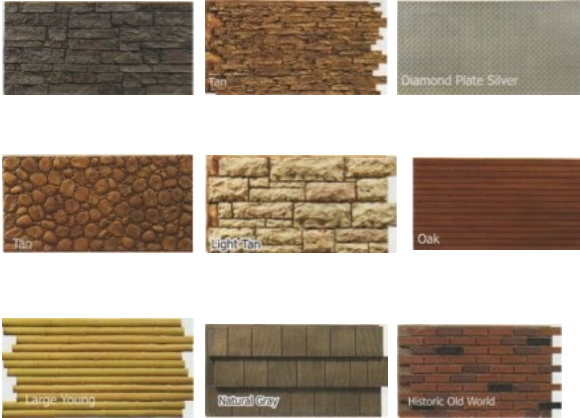
**email:** [info@conceptinabox.com](mailto:info@conceptinabox.com)

**website:** [www.conceptinabox.com](http://www.conceptinabox.com)

not for construction\* These drawings and pictures are under copyright law. Not to be reproduced without "author's" written consent. All design ideas and concepts are the sole property of Container Concepts™ and are only to be used if contracted to do so.



# Expert Fabrication and Installation



## Texture Paneling:

Panels are pre-cut 2'x4' sections and are rated for indoor and outdoor use. These are just a few examples. There are many more and we can provide a catalog of more designs.



**office:** 888.427.4014

**email:** [info@conceptinabox.com](mailto:info@conceptinabox.com)

**website:** [www.conceptinabox.com](http://www.conceptinabox.com)

not for construction\* These drawings and pictures are under copyright law. Not to be reproduced without "author's" written consent. All design ideas and concepts are the sole property of Container Concepts™ and are only to be used if contracted to do so.



**CONTAINER CONCEPTS**  
THINKING INSIDE THE BOX™



## MINI DONUT BOX™



**Box Footprint Approx. 80 Sq ft.**

**Base Price: [Click Here](#)**

**Container Concepts™** is proud to announce it's partnership with Lil' Orbits. We are offering a fully turnkey doughnut operation in a Box! Easy way to make and to prepare doughnuts. Your customers will come running for these tasty treats.

**office:** 888.427.4014

**email:** [info@conceptinabox.com](mailto:info@conceptinabox.com)

**website:** [www.conceptinabox.com](http://www.conceptinabox.com)

not for construction\* These drawings and pictures are under copyright law. Not to be reproduced without "author's" written consent. All design ideas and concepts are the sole property of Container Concepts™ and are only to be used if contracted to do so.



## Features

- 8'X10' Container
- Lil Orbits Doughnut Maker
- Integrated Counter with Cold Storage
- 3 Compartment Sink
- Reach-In Refrigerator Unit
- Signage and Logo Wrapping
- Integral POS Capabilities
- Menu Board



**CONTAINER CONCEPTS**  
THINKING INSIDE THE BOX™

# TAMALE BOX™



**Box Footprint Approx. 80 Sq ft.**

**Base Price: [Click Here](#)**

This take-out tamale stand gives you a full blown take-out tamale restaurant anywhere you want it. Perfect for sporting events, outdoor concerts or any place where large crowds gather. Opt. Hot Dogs, Dumplings, Pretzels...



## Features

- 8'X10' Container
- Reach in cooler
- 3 Compartment Sink
- Hot Table
- Steel Counter
- Soda/Ice Dispenser
- Integral POS Capabilities
- Signage and Logo Wrapping

office: 888.427.4014

email: [info@conceptinabox.com](mailto:info@conceptinabox.com)

website: [www.conceptinabox.com](http://www.conceptinabox.com)

not for construction \* These drawings and pictures are under copyright law. Not to be reproduced without "author's" written consent. All design ideas and concepts are the sole property of Container Concepts™ and are only to be used if contracted to do so.



**CONTAINER CONCEPTS**  
THINKING INSIDE THE BOX™

## FRO-YO BOX™



**Box Footprint Approx. 80 Sq ft.**  
**Base Price: [Click Here](#)**

Beat the heat in this fully self contained Fro-Yo Box. Sell Frozen Yogurt or Ice Cream in this versatile unit. Everything you need with bright colors and signage to draw a crowd. Options: Shave Ice, Milkshakes, Popcorn...

**office:** 888.427.4014

**email:** [info@conceptinabox.com](mailto:info@conceptinabox.com)

**website:** [www.conceptinabox.com](http://www.conceptinabox.com)

not for construction\* These drawings and pictures are under copyright law. Not to be reproduced without "author's" written consent. All design ideas and concepts are the sole property of Container Concepts™ and are only to be used if contracted to do so.



### Features

- 8'X10' Container
- Frozen Yogurt Dispenser
- Reach in Cooler
- Counter and Sink
- POS Technology Package
- Ingredient Wall
- Signage and Logo Wrapping
- Attachable Walk-in Cooler (Additional Cost)



**CONTAINER CONCEPTS**  
THINKING INSIDE THE BOX™

## MINI BAKERY BOX™



**Box Footprint Approx. 80 Sq ft.**  
**Base Price: [Click Here](#)**

Muffins, cupcakes, and cookies! Oh my! An instant coffee and mini bakery all in one. Easy set up and breakdown. Unique eco friendly branding opportunities. Options: Bagels, Cupcakes, Pretzels...

**office:** 888.427.4014

**email:** [info@conceptinabox.com](mailto:info@conceptinabox.com)

**website:** [www.conceptinabox.com](http://www.conceptinabox.com)

not for construction\* These drawings and pictures are under copyright law. Not to be reproduced without "author's" written consent. All design ideas and concepts are the sole property of Container Concepts™ and are only to be used if contracted to do so.



## Features

- 8'X10' Container
- Bakery Display
- Coffee Maker
- Reach in Cooler
- Counter and Sink
- POS Technology Package
- Signage and Logo Wrapping



**CONTAINER CONCEPTS**  
THINKING INSIDE THE BOX™

## BACKYARD BBQ Box™



**Box Footprint Approx. 80 Sq ft.**

**Base Price: [Click Here](#)**

This box creates an instant showpiece for anyone's back yard, courtyard, deck, beach or dock. Comes complete and set up is easy. Attaches to utilities or can be used off grid. Integrated BBQ, range sink coolers and room for up to (4) 5 gallon kegs. MP4 dock included and optional HDTV will keep the party rocking.

**office:** 888.427.4014

**email:** [info@conceptinabox.com](mailto:info@conceptinabox.com)

**website:** [www.conceptinabox.com](http://www.conceptinabox.com)

not for construction\* These drawings and pictures are under copyright law. Not to be reproduced without "author's" written consent. All design ideas and concepts are the sole property of Container Concepts™ and are only to be used if contracted to do so.



## Features

- 8'X10' Container
- Propane or Natural gas grill
- Integrated Counter with Cold Storage
- 4 tap Beer/Soda Dispenser
- Reach-In Refrigerator Unit
- MP4 Dock and Speaker System
- Custom Paint (Team Colors?)
- Ceiling Fan/Lighting
- Roof (Optional Additional Cost)
- HDTV (Optional Additional Cost)



**CONTAINER CONCEPTS**  
THINKING INSIDE THE BOX™

## CAFE BOX™ 12'



**Box Footprint Approx. 96 Sq ft.**

**Base Price: [Click Here](#)**

Here is the supreme cafe experience! Indoor and outdoor courtyards, rooftop decks, and auxiliary kitchen. Bring your concept to life and wow your customers with this modern design. Concepts: Anything you can think of...

**office:** 888.427.4014

**email:** [info@conceptinabox.com](mailto:info@conceptinabox.com)

**website:** [www.conceptinabox.com](http://www.conceptinabox.com)

not for construction\* These drawings and pictures are under copyright law. Not to be reproduced without "author's" written consent. All design ideas and concepts are the sole property of Container Concepts™ and are only to be used if contracted to do so.



## Features

- 8'X12' Container
- Fully Equipped Kitchen
- Integrated Counter with Cold Storage
- Soda/ Ice Dispenser
- Hood system/ Fire Suppression
- Reach-In Refrigerator Unit
- Integral POS Capabilities
- Signage and Logo Wrapping



**CONTAINER CONCEPTS**  
THINKING INSIDE THE BOX™

## CAFE BOX™ 20'



**Box Footprint Approx. 160+ Sq ft.**

**Base Price: [Click Here](#)**

The ideal solution for any concept that wants an all in one solution and quick path to market. Clean design, integrated storefront with seating and walk up counter makes it perfect for all types of weather. Options: Anything you can think of....

**office:** 888.427.4014

**email:** [info@conceptinabox.com](mailto:info@conceptinabox.com)

**website:** [www.conceptinabox.com](http://www.conceptinabox.com)

not for construction\* These drawings and pictures are under copyright law. Not to be reproduced without "author's" written consent. All design ideas and concepts are the sole property of Container Concepts™ and are only to be used if contracted to do so.



## Features

- 8'X20' Container
- Fully Equipped Kitchen
- Integrated Counter with Cold Storage
- Soda Dispenser
- Hood system/ Fire Suppression
- Reach-In Refrigerator Unit
- Integral POS Capabilities
- Signage and Logo Wrapping



**CONTAINER CONCEPTS**  
THINKING INSIDE THE BOX™

## CAFE / BURGER BOX™ 40' M



**Box Footprint Approx. 320 Sq ft.**

**Base Price: [Click Here](#)**

Here is the supreme cafe experience! Indoor and outdoor courtyards, rooftop decks, and auxiliary kitchen. Bring your concept to life and wow your customers with this modern design. What more could you ask for?



### Features

- 8'X20' Container
- Fully Equipped Kitchen
- Integrated Counter with Cold Storage
- Soda Dispenser
- Hood system/ Fire Suppression
- Reach-In Refrigerator Unit
- Integral POS Capabilities
- Signage and Logo Wrapping

**office:** 888.427.4014

**email:** [info@conceptinabox.com](mailto:info@conceptinabox.com)

**website:** [www.conceptinabox.com](http://www.conceptinabox.com)

not for construction\* These drawings and pictures are under copyright law. Not to be reproduced without "author's" written consent. All design ideas and concepts are the sole property of Container Concepts™ and are only to be used if contracted to do so.



**CONTAINER CONCEPTS**  
THINKING INSIDE THE BOX™



## PIZZA BOX™ 20'



**Box Footprint Approx. 320 Sq ft.**

**Price [Click Here](#)**

Pizzas, calzones or flat breads; you can do them all in this easy ready to bake Pizza Box. This little box comes loaded to dish out all kinds of italian baked treats. A unique delivery 360° marketing system for vending, and profiting faster and easier.

**office:** 888.427.4014

**email:** [info@conceptinabox.com](mailto:info@conceptinabox.com)

**website:** [www.conceptinabox.com](http://www.conceptinabox.com)

not for construction\* These drawings and pictures are under copyright law. Not to be reproduced without "author's" written consent. All design ideas and concepts are the sole property of Container Concepts™ and are only to be used if contracted to do so.



## Features

- 8'X20' Container
- Pizza Oven
- Integrated Counter with Cold Storage
- Soda Dispenser
- Reach-In Refrigerator Unit
- Wifi Technology Package
- Signage/Logo Wrapping
- Integral POS Capabilities



**CONTAINER CONCEPTS**  
THINKING INSIDE THE BOX™

## PIZZA BOX™ 40'



**Box Footprint Approx. 640 Sq ft.**

**Price [Click Here](#)**

This larger scale Pizza Box is perfect for an outdoor restaurant, or for events or as a concession. With two wood fired ovens you can be cranking out the pizzas and flatbreads for lines of hungry customers.

**contact info:** 888.427.4014

**email:** [info@conceptinabox.com](mailto:info@conceptinabox.com)

**website:** [www.conceptinabox.com](http://www.conceptinabox.com)

not for construction\* These drawings and pictures are under copyright law. Not to be reproduced without "author's" written consent. All design ideas and concepts are the sole property of Container Concepts™ and are only to be used if contracted to do so.



### Features

- 8'X40' Container
- Pizza Oven
- Integrated Counter with Cold Storage
- Soda Dispenser
- Reach-In Refrigerator Unit
- Wifi Technology Package
- Signage/Logo Wrapping
- Integral POS Capabilities



**CONTAINER CONCEPTS**  
THINKING INSIDE THE BOX™

# JUICE BOX™



**Box Footprint Approx. 160 Sq ft.**

**Base Price: [Click Here](#)**

Squeezed juice, pressed juice, smoothies energy drinks, and protein powders all in a box. Quick and easy set up for sporting and fitness events, and exploring new markets. A unique delivery system that allows 360° marketing, vending, and profiting faster and easier.

**office:** 888.427.4014

**email:** [info@conceptinabox.com](mailto:info@conceptinabox.com)

**website:** [www.conceptinabox.com](http://www.conceptinabox.com)

not for construction\* These drawings and pictures are under copyright law. Not to be reproduced without "author's" written consent. All design ideas and concepts are the sole property of Container Concepts™ and are only to be used if contracted to do so.

## Features

- 8'X20' Container
- Juice Dispensers
- Frozen Yogurt Dispenser
- Reach in Cooler
- Integrated Counter Cooler
- Digital Menu Systems
- Integral POS Capabilities
- Technology Package
- Signage and Logo Wrapping



**CONTAINER CONCEPTS**  
THINKING INSIDE THE BOX™

**SMOK'IN BOX™**



**Box Footprint Approx. 160 Sq ft.**  
**Base Price: [Click Here](#)**

You name it you can roast it or smoke it! This all in one box is perfect for roasting and smoking. You can do ribs and chicken pork and beef. Any tailgating, outdoor, or concert event or as a small smokehouse roadside BBQ.

**office:** 888.427.4014  
**email:** [info@conceptinabox.com](mailto:info@conceptinabox.com)  
**website:** [www.conceptinabox.com](http://www.conceptinabox.com)

not for construction\* These drawings and pictures are under copyright law. Not to be reproduced without "author's" written consent. All design ideas and concepts are the sole property of Container Concepts™ and are only to be used if contracted to do so.



## Features

- 8'X20' Container
- Flip up Awning
- (2) Smoker/BBQ pits
- Integrated Counter with Cold Storage
- Hand Sink
- Signage and Logo Wrapping
- 20' Trailer



**CONTAINER CONCEPTS**  
THINKING INSIDE THE BOX™

# PROMO BOX™



**Box Footprint Approx. 160 Sq ft. 20' Container**  
**Base Price: [Click Here](#)**

Perfect for a pop-up promotional or retail space! Events, trunk shows parties indoor/ outdoor mall or shopping center parking lot. Showcase your brand with 360 degree marketing! Closes up into a ship ready box.

**office:** 888.427.4014

**email:** [info@conceptinabox.com](mailto:info@conceptinabox.com)

**website:** [www.conceptinabox.com](http://www.conceptinabox.com)

not for construction\* These drawings and pictures are under copyright law. Not to be reproduced without "author's" written consent. All design ideas and concepts are the sole property of Container Concepts™ and are only to be used if contracted to do so.

## Features

- Flip Down Extended Stage, Flip Out Doors
- Flip Up Awning that pulls out from Container
- Lockable 4'x5' Storage within Container
- Electrical outlets/Basic Lighting
- Logo Wrapping or Paint

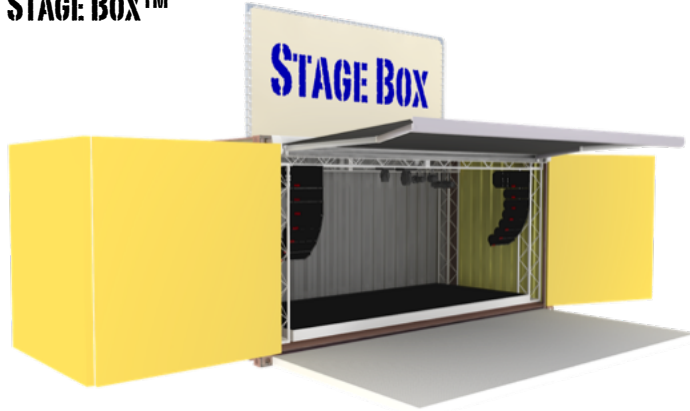
### Optional Package:

- Special Signage
- Additional Container as a Roof Deck
- Small Generator
- Lighting System
- Audio/Visual System
- Monitors and Speakers



**CONTAINER CONCEPTS**  
THINKING INSIDE THE BOX™

## STAGE BOX™



**Box Footprint Approx. 160 Sq ft. 20' Container**  
**Base Price: [Click Here](#)**

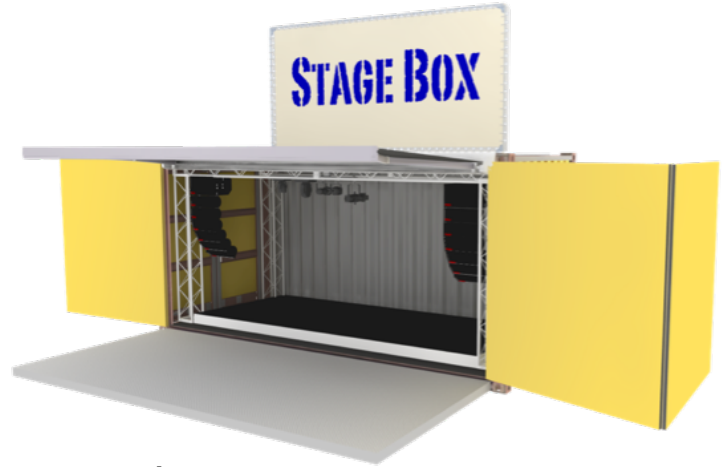
If you want a showcase for your band in a remote location the 20' Stage Box is the answer. This box can be fully equipped and customized for your event. Fold out doors hold audio and video, retractable awning keeps the shade and concert

**office:** 888.427.4014

**email:** [info@conceptinabox.com](mailto:info@conceptinabox.com)

**website:** [www.conceptinabox.com](http://www.conceptinabox.com)

not for construction\* These drawings and pictures are under copyright law. Not to be reproduced without "author's" written consent. All design ideas and concepts are the sole property of Container Concepts™ and are only to be used if contracted to do so.



## Features

- Flip down Extended Stage
- Retractable Awning that pulls out from Container
- Lockable Storage within Container
- Sound/Speaker Wings swing out from inside Container
- Electrical Outlets
- (2) Lighting Rigs
- Logo Wrapping or Paint
- Optional Package (see Promo Box)



**CONTAINER CONCEPTS**  
THINKING INSIDE THE BOX™

## BAR BOX™



**Box Footprint Approx. 320 Sq ft.**

**Base Price: [Click Here](#)**

The ultimate Bar/Tasting room! Take to festivals, Farmers Markets or add to your existing winery brewery or distillery. Promoting and marketing your business. Also perfect for a bar at any event or party.

**office:** 888.427.4014

**email:** [info@conceptinabox.com](mailto:info@conceptinabox.com)

**website:** [www.conceptinabox.com](http://www.conceptinabox.com)

not for construction\* These drawings and pictures are under copyright law. Not to be reproduced without "author's" written consent. All design ideas and concepts are the sole property of Container Concepts™ and are only to be used if contracted to do so.



## Features

- 8'X20' Container
- Reach in Cooler
- Counter and Sink
- Bar Shelving Unit
- POS Technology Package Included
- Tap System Under Counter Chiller
- Signage and Logo Wrapping or Paint
- Attachable Walk-in Cooler(Additional Cost)



**CONTAINER CONCEPTS**  
THINKING INSIDE THE BOX™

## VIP BAR BOX™



**Box Footprint Approx. 320 Sq ft.**

**Base Price: [Click Here](#)**

Do you have a liquor line you would like to promote? Are you a distributor that wants to show case a line of brands? You can do it in this fully equipped pop-up Bar Box. Integrated sinks and refrigeration keep the party going!

**office:** 888.427.4014

**email:** [info@conceptinabox.com](mailto:info@conceptinabox.com)

**website:** [www.conceptinabox.com](http://www.conceptinabox.com)

not for construction\* These drawings and pictures are under copyright law. Not to be reproduced without "author's" written consent. All design ideas and concepts are the sole property of Container Concepts™ and are only to be used if contracted to do so.



## Features

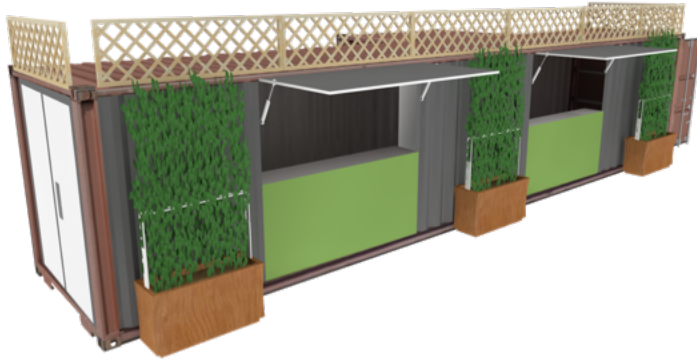
- (2) 8'X20' Containers
- Reach in Cooler
- Counter and Sink
- Bar Shelving Unit
- POS Technology Package Included
- Tap System Under Counter Chiller
- Signage and Logo Wrapping or paint
- Attachable Walk-in Cooler(Additional Cost)



**CONTAINER CONCEPTS**  
THINKING INSIDE THE BOX™



## BEER GARDEN BOX™



**Box Footprint Approx. 320 Sq ft.**

**Base Price: [Click Here](#)**

The ultimate beer experience! Room for 20+ taps with integrated tap system, attached keg room, and kitchen. You can have your own taproom in a box! Great for park food service, office courtyards outdoor events... you name it!

**office:** 888.427.4014

**email:** [info@conceptinabox.com](mailto:info@conceptinabox.com)

**website:** [www.conceptinabox.com](http://www.conceptinabox.com)

not for construction\* These drawings and pictures are under copyright law. Not to be reproduced without "author's" written consent. All design ideas and concepts are the sole property of Container Concepts™ and are only to be used if contracted to do so.



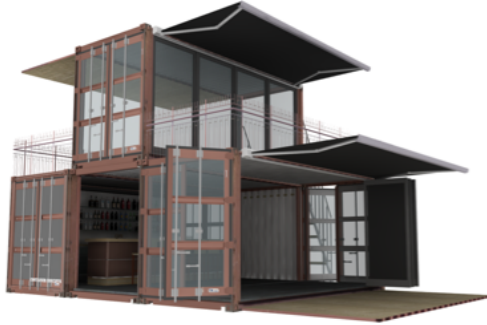
## Features

- 8'X40' Modified Container
- 8'X10' Modified Cooler/Walk-in(Additional Cost)
- Full Grill Kitchen with Hood System & Fire Suppression
- Tap System and Under Counter Chiller
- POS Technology Package
- Attachable Smoker(Additional Cost)
- Wood Lattice (Additional Cost)
- 3 - 8'X4' Vertical Hops Trellis Planters (Additional Cost)
- Signage and Logo Wrapping(Additional Cost)



**CONTAINER CONCEPTS**  
THINKING INSIDE THE BOX™

# EVENT BOX™



**Box Footprint Approx. 640 Sq ft.**

**Base Price: [Click Here](#)**

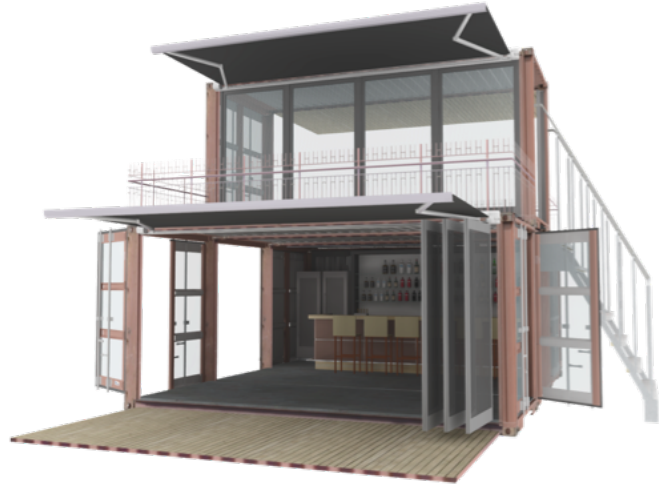
Large event box with an integrated bar. There is room for seating or dance floor, upstairs decks and room for a DJ booth. Bring the party to you or open it up at the beach. Perfect for promotions and festivals.

**office:** 888.427.4014

**email:** [info@conceptinabox.com](mailto:info@conceptinabox.com)

**website:** [www.conceptinabox.com](http://www.conceptinabox.com)

not for construction\* These drawings and pictures are under copyright law. Not to be reproduced without "author's" written consent. All design ideas and concepts are the sole property of Container Concepts™ and are only to be used if contracted to do so.



## Features

- (3) 8'X20' Container
- Reach in Cooler
- Counter and Sink
- Bar Shelving Unit
- POS Technology Package Included
- Bar System and Under Counter Chiller
- Signage and Logo Wrapping or Paint
- Attachable Walk-in cooler(Additional Cost)



**CONTAINER CONCEPTS**  
THINKING INSIDE THE BOX™

# WINE BOX™



**Box Footprint Approx. 80 Sq ft.**

**Base Price: [Click Here](#)**

Showcase your winery on the road or at farmers markets with this all in one pop - up Wine Box. Everything you need with bright colors and signage to draw a crowd. Show off your brand in an eco friendly way.

**office:** 888.427.4014

**email:** [info@conceptinabox.com](mailto:info@conceptinabox.com)

**website:** [www.conceptinabox.com](http://www.conceptinabox.com)

not for construction\* These drawings and pictures are under copyright law. Not to be reproduced without "author's" written consent. All design ideas and concepts are the sole property of Container Concepts™ and are only to be used if contracted to do so.



## Features

- 8'X10' Container
- Reach in Wine Cooler
- Stainless Steel Counter and Sink
- Under Counter Glass and Wine Storage
- Lighting and Menu Board
- Signage and Logo Wrapping
- POS Technology Package (Additional Cost)
- Attachable Walk-in Cooler (Additional Cost)



**CONTAINER CONCEPTS**  
THINKING INSIDE THE BOX™

# BEER BOX™



**Box Footprint Approx. 80 Sq ft.**

**Base Price: [Click Here](#)**

Beat the heat in the Beer Box! The ultimate in beer dispensing. Up to 12 taps can pump out the suds and give your customers a great looking and functional delivery system for your brand. Flip-up windows, stainless steel counters and a make this cool way to dispense beer.

**office:** 888.427.4014

**email:** [info@conceptinabox.com](mailto:info@conceptinabox.com)

**website:** [www.conceptinabox.com](http://www.conceptinabox.com)

not for construction\* These drawings and pictures are under copyright law. Not to be reproduced without "author's" written consent. All design ideas and concepts are the sole property of Container Concepts™ and are only to be used if contracted to do so.



## Features

- 8'X10' Container
- Under Counter Storage
- Stainless Steel Counter and Sink
- Lighting and Menu Board
- Electrical hook ups
- Signage and Logo Wrapping
- Bluetooth Stereo System with Speakers
- 4, 8, or 12 Tap Keg System (Varied Cost)
- POS Technology Package (Additional Cost)
- Attachable Walk-in Cooler (Additional Cost)
- Roof (Additional Cost)
- Fan System (Additional Cost)



**CONTAINER CONCEPTS**  
THINKING INSIDE THE BOX™



**Box Footprint Approx. 160 Sq ft. 480 Sq ft. Open**  
**Base Price [Click Here](#)**

Perfect for holding and disposing wine whether in a box or not. Comes with a food service component that will do light meals and appetizers for whatever event you are throwing. Folds up completely to be a mobile unit.

**office:** 888.427.4014

**email:** [info@conceptinabox.com](mailto:info@conceptinabox.com)

**website:** [www.conceptinabox.com](http://www.conceptinabox.com)

not for construction\* Items pictured are only representations These drawings and pictures are under copyright law. Not to be reproduced without "author's" written consent. All design ideas and concepts are the sole property of Container Concepts™ and are only to be used if contracted to do so.



## Features

- 8' X 20' Container
- Flip Awnings/Drop Down Deck
- Counters Interior/Removable Exterior
- Three Compartment/Hand Sinks
- Bar Shelving Unit/Glass Rack
- Mp4 Wireless Audio System and 2 Speakers
- Pizza Oven, Evo Grill, Sous Vide (Optional)
- Under Counter Cooler/Dry Storage
- Warm/Cold Holding 4 Compartment Station
- Logo Wrapping & Paint
- Attachable Walk-in cooler (Additional cost)
- Roof Top Signage (Additional cost)



**CONTAINER CONCEPTS**  
THINKING INSIDE THE BOX™

# EVENT BEER BOX™



**Box Footprint Approx. 640 Sq ft.**  
**Base Price [Click Here](#)**

Comes complete and set up is easy. Attaches to utilities or can be used off grid. It has an integrated sink coolers and room for up to (8) 5.5 gallon kegs. Wireless stereo system included and optional HDTV and solar panels. Flip down walls and upper deck extend seating.

**office:** 888.427.4014

**email:** [info@conceptinabox.com](mailto:info@conceptinabox.com)

**website:** [www.conceptinabox.com](http://www.conceptinabox.com)

not for construction\* These drawings and pictures are under copyright law. Not to be reproduced without "author's" written consent. All design ideas and concepts are the sole property of Container Concepts™ and are only to be used if contracted to do so.



## Features

- 8' X 20' Container
- Flip Up Awnings/Flip Down Walls
- Upper Deck with Spiral Staircase
- 3 Sided Integrated Counter with Cold Storage
- 8 tap Beer Dispenser
- MP4 Dock and Speaker System
- Custom Paint
- Ceiling Fan
- Lighting Solar Panels
- Fixed Roof Awning (Optional)
- HDTV (Optional)



**CONTAINER CONCEPTS**  
THINKING INSIDE THE BOX™

**COFFEE BOX™**



**Box Footprint Approx. 80 Sq ft.**

**Base Price: [Click Here](#)**

The ultimate coffee Drive through! Everything you need for a quick service operation all in one box. Perfect to test a new concept and market area.

**office:** 888.427.4014

**email:** [info@conceptinabox.com](mailto:info@conceptinabox.com)

**website:** [www.conceptinabox.com](http://www.conceptinabox.com)

not for construction\* These drawings and pictures are under copyright law. Not to be reproduced without "author's" written consent. All design ideas and concepts are the sole property of Container Concepts™ and are only to be used if contracted to do so.



## Features

- 8'X10' Container
- Integrated Counter with Sink
- 4 pot Coffee/Esspresso Dispenser
- Reach-In Refrigerator Unit
- Custom Paint
- Ceiling Fan/Lighting
- Roof Optional (Additional Cost)
- Special Signage (Additional Cost)



**CONTAINER CONCEPTS**  
THINKING INSIDE THE BOX™

## FARM/FLOWER BOX™ 10'



**Box Footprint Approx. 80 Sq ft.**

**Base Price: [Click Here](#)**

With easy drop down design that This is the small farmer's friend. A quick set-up design that opens your stand for business in a matter of minutes Farm fresh flowers in a easy set up box that will be the hit of any Farmers Market..

**office:** 888.427.4014

**email:** [info@conceptinabox.com](mailto:info@conceptinabox.com)

**website:** [www.conceptinabox.com](http://www.conceptinabox.com)

not for construction\* These drawings and pictures are under copyright law. Not to be reproduced without "author's" written consent. All design ideas and concepts are the sole property of Container Concepts™ and are only to be used if contracted to do so.



## Features

- 8'X10' Container
- Removable Side Walls
- Shelving and Display
- Signage and Logo Wrapping
- Integral POS Capabilities (Additional Cost)





## FARM/FLOWER BOX™ 20'



**Box Footprint Approx. 160+ Sq ft.**  
**Base Price: [Click Here](#)**

Bring all of your farm fresh goods to the local farmers market or a modern functional stand on the side of the road. The Farm Box opens for business in a matter of minutes with our quick set-up design. Showcase your flowers and plants with built in shelving and displays.

**office:** 888.427.4014

**email:** [info@conceptinabox.com](mailto:info@conceptinabox.com)

**website:** [www.conceptinabox.com](http://www.conceptinabox.com)

not for construction\* These drawings and pictures are under copyright law. Not to be reproduced without "author's" written consent. All design ideas and concepts are the sole property of Container Concepts™ and are only to be used if contracted to do so.



### Features

- 8'X20' Container
- Removable Side Walls
- Shelving and Display
- Signage and Logo Wrapping
- Integral POS Capabilities (Additional Cost)



**CONTAINER CONCEPTS**  
THINKING INSIDE THE BOX™

## RETAIL BOX™ 20'



**Box Footprint Approx. 80 Sq ft.**

**Base Price: [Click Here](#)**

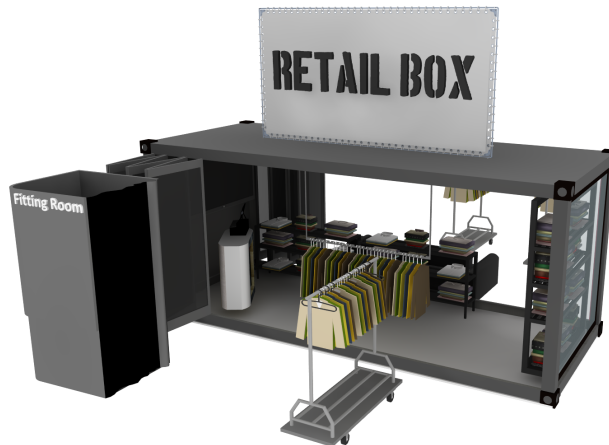
Perfect for a pop-up retail space! Events, trunk shows parties indoor/ outdoor mall or shopping center parking lot. Showcase your brand with 360 degree marketing!

**office:** 888.427.4014

**email:** [info@conceptinabox.com](mailto:info@conceptinabox.com)

**website:** [www.conceptinabox.com](http://www.conceptinabox.com)

not for construction\* These drawings and pictures are under copyright law. Not to be reproduced without "author's" written consent. All design ideas and concepts are the sole property of Container Concepts™ and are only to be used if contracted to do so.



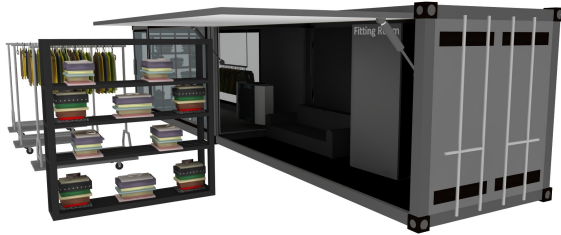
## Features

- 8'X20' Container
- MP4 Dock and Speaker System
- Custom paint (Brand Colors?)
- Ceiling Fan/Lighting
- HDTV (Optional Additional Cost)



**CONTAINER CONCEPTS**  
THINKING INSIDE THE BOX™

## RETAIL BOX™ 40'



**Box Footprint Approx. 320 Sq ft.**

**Base Price: [Click Here](#)**

If you want to showcase your brand in a remote location the 40' Retail box is the answer. This box can be fully equipped and customized for your brand. All basic electrical is included.

**office:** 888.427.4014

**email:** [info@conceptinabox.com](mailto:info@conceptinabox.com)

**website:** [www.conceptinabox.com](http://www.conceptinabox.com)

not for construction\* These drawings and pictures are under copyright law. Not to be reproduced without "author's" written consent. All design ideas and concepts are the sole property of Container Concepts™ and are only to be used if contracted to do so.



## Features

- 8'X40' Container
- Custom paint (Brand Colors?)
- Ceiling Fan/Lighting
- Integrated POS
- Signage and Logo Wrapping
- HDTV Optional (Additional Cost)
- Audio Speaker System



**CONTAINER CONCEPTS**  
THINKING INSIDE THE BOX™

## PHOTO BOX™



**Box Footprint Approx. 160 Sq ft.**

**Base Price: [Click Here](#)**

The Photo Box is a photo booth on wheels. With attached space for costumes and makeup table for parties or events. Make someone a star! Optional wifi enabled to upload to social media

**office:** 888.427.4014

**email:** [info@conceptinabox.com](mailto:info@conceptinabox.com)

**website:** [www.conceptinabox.com](http://www.conceptinabox.com)

not for construction\* These drawings and pictures are under copyright law. Not to be reproduced without "author's" written consent. All design ideas and concepts are the sole property of Container Concepts™ and are only to be used if contracted to do so.



## Features

- 8'X 20' Container
- Optional Trailer/Stairs
- Digital/Auto Photo Booth
- Dressing room
- Make up Table
- POS Technology Package
- Signage and Logo Wrapping



**CONTAINER CONCEPTS**  
THINKING INSIDE THE BOX™

## Ticket Box™ 10'-20'



**Box Footprint Approx. 80 Sq ft & 120 Sq ft.**

**Base Price: [Click Here](#)**

Set up and sell tickets virtually anywhere... county fairs, local festivals, earth day celebrations. It's just the ticket for looking professional, and an eco friendly way to dispense tickets for your next event.

**office:** 888.427.4014

**email:** [info@conceptinabox.com](mailto:info@conceptinabox.com)

**website:** [www.conceptinabox.com](http://www.conceptinabox.com)

not for construction\* These drawings and pictures are under copyright law. Not to be reproduced without "author's" written consent. All design ideas and concepts are the sole property of Container Concepts™ and are only to be used if contracted to do so.



### Features

- 8' X 10', 20' Container
- Removable Wall
- Wifi Technology Package
- Signage/Logo Wrapping
- Integral POS Capabilities
- Custom Paint
- Ceiling Fan/Lighting
- Roof Optional (Additional Cost)
- Special Signage (Additional Cost)



**CONTAINER CONCEPTS**  
THINKING INSIDE THE BOX™

## PHONE BOX™



**Box Footprint Approx. 80 Sq ft.**

**Base price [Click Here](#)**

Can't hear your phone or looking for some privacy in a retro way? Phone Box offers a convenient and fun way to charge your phone and have a private phone call at a loud event or concert.

**office:** 888.427.4014

**email:** [info@conceptinabox.com](mailto:info@conceptinabox.com)

**website:** [www.conceptinabox.com](http://www.conceptinabox.com)

not for construction\* These drawings and pictures are under copyright law. Not to be reproduced without "author's" written consent. All design ideas and concepts are the sole property of Container Concepts™ and are only to be used if contracted to do so.



## Features

- 8'X10' Container
- Signage and Logo Wrapping
- Wifi capable charging station
- Roof (Additional Cost)



**CONTAINER CONCEPTS**  
THINKING INSIDE THE BOX™

# CHARGING BOX™ 10'



**Box Footprint Approx. 80 Sq ft.**

**Base Price: [Click Here](#)**

Outdoor or indoors never be without a charge. The Charge box is a mini charging station where you can hook up for a quick charge for your Phone laptop or mobile device. Great for campuses, airports and metro stations.

**office:** 888.427.4014

**email:** [info@conceptinabox.com](mailto:info@conceptinabox.com)

**website:** [www.conceptinabox.com](http://www.conceptinabox.com)

not for construction\* These drawings and pictures are under copyright law. Not to be reproduced without "author's" written consent. All design ideas and concepts are the sole property of Container Concepts™ and are only to be used if contracted to do so.



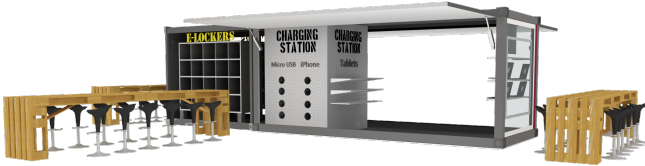
## Features

- 8'X10' Container
- Tie in to Utilities or Generator
- Paint/Logo Wrapping
- Special Signage (Additional Cost)



**CONTAINER CONCEPTS**  
THINKING INSIDE THE BOX™

## CHARGING BOX™ 30'



**Box Footprint Approx. 320 Sq ft.**

**Base Price: [Click Here](#)**

The ultimate charging station where you can go for a quick charge for your Phone laptop or mobile device. The unique E-Lockers™ allow you to leave your device securely for a longer charge. Great for campuses, airports and metro stations.

### Features

- 8'X30' Container
- Tie in to Utilities or Generator
- Paint/Logo Wrapping
- Special Signage (Additional Cost)
- Signage and Logo Wrapping

**office:** 888.427.4014

**email:** [info@conceptinabox.com](mailto:info@conceptinabox.com)

**website:** [www.conceptinabox.com](http://www.conceptinabox.com)

not for construction\* These drawings and pictures are under copyright law. Not to be reproduced without "author's" written consent. All design ideas and concepts are the sole property of Container Concepts™ and are only to be used if contracted to do so.





## GRO BOX™ 20'



**Box Footprint Approx. 320 Sq ft.**

**Base Price: [Click Here](#)**

Here is the supreme cafe experience! Indoor and outdoor courtyards, rooftop decks, and auxiliary kitchen. Bring your concept to life and wow your customers with this modern design. What more could you ask for?

**office:** 888.427.4014

**email:** [info@conceptinabox.com](mailto:info@conceptinabox.com)

**website:** [www.conceptinabox.com](http://www.conceptinabox.com)

not for construction\* These drawings and pictures are under copyright law. Not to be reproduced without "author's" written consent. All design ideas and concepts are the sole property of Container Concepts™ and are only to be used if contracted to do so.

## Features

- 8'X20' Container + 8' Extensions
- Fully Equipped Growing room
- Hydroponic lighting system
- Vent System/ Fire Suppression
- Exterior Lighting
- Raised off ground
- Video security system



**CONTAINER CONCEPTS**  
THINKING INSIDE THE BOX™

## GRO BOX™ 40'



**Box Footprint Approx. 320 Sq ft.**  
**Base Price: [Click Here](#)**

Here is the supreme cafe experience! Indoor and outdoor courtyards, rooftop decks, and auxiliary kitchen. Bring your concept to life and wow your customers with this modern design. What more could you ask for?

**office:** 888.427.4014  
**email:** [info@conceptinabox.com](mailto:info@conceptinabox.com)  
**website:** [www.conceptinabox.com](http://www.conceptinabox.com)

not for construction\* These drawings and pictures are under copyright law. Not to be reproduced without "author's" written consent. All design ideas and concepts are the sole property of Container Concepts™ and are only to be used if contracted to do so.

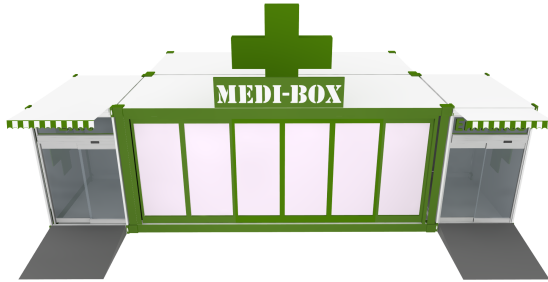
## Features

- 8'X40' Container
- Fully Equipped Growing room
- Hydroponic lighting system
- Vent System/ Fire Suppression
- Exterior Lighting
- Raised off ground
- Video security system



**CONTAINER CONCEPTS**  
THINKING INSIDE THE BOX™

# MEDI - Box™



**Box Footprint Approx. 400 Sq ft.**  
**Base Price: [Click Here](#)**

Either a clinic or a dispensary the choice will fit the market in urban and remote areas. This all in one Medi - Box™ has everything you would need to start a business in healthcare delivery.

**office:** 888.427.4014

**email:** [info@conceptinabox.com](mailto:info@conceptinabox.com)

**website:** [www.conceptinabox.com](http://www.conceptinabox.com)

not for construction\* These drawings and pictures are under copyright law. Not to be reproduced without "author's" written consent. All design ideas and concepts are the sole property of Container Concepts™ and are only to be used if contracted to do so.



## Features

- (2) 8'X20' Container
- Specialized sliding
- Integrated Counter with Cold Storage
- Fully Equipped Sorting Room
- Hydroponic Lighting System
- Vent System / Fire Suppression
- Exterior Lighting
- Video Security System
- POS Capabilities



**CONTAINER CONCEPTS**  
CONCEPT IN A BOX™

Visit our website for updates to the catalog and more information.

